

ADTEK

Company introduction

2019.06

Marketing Manager

Joyce Chen

The ADTEK logo is located in the bottom right corner. It features the word "ADTEK" in a bold, sans-serif font. The letters "AD" are dark green, and the letters "TEK" are a lighter, vibrant green. The logo is positioned on a white background that forms a diagonal shape on the right side of the slide.

ADTEK

ADTEK:

Taiwan Leading Power Meter Brand



- Established in 1990 , headquartered in New Taipei City, Taiwan. Up to 30 years.
- Power Meter specialist, from entry level to high level
- Cover the market of both Power Management and Industrial Automation.
- Fast-paced research & development
- Customization services.
- Biggest Taiwanese meter exporter



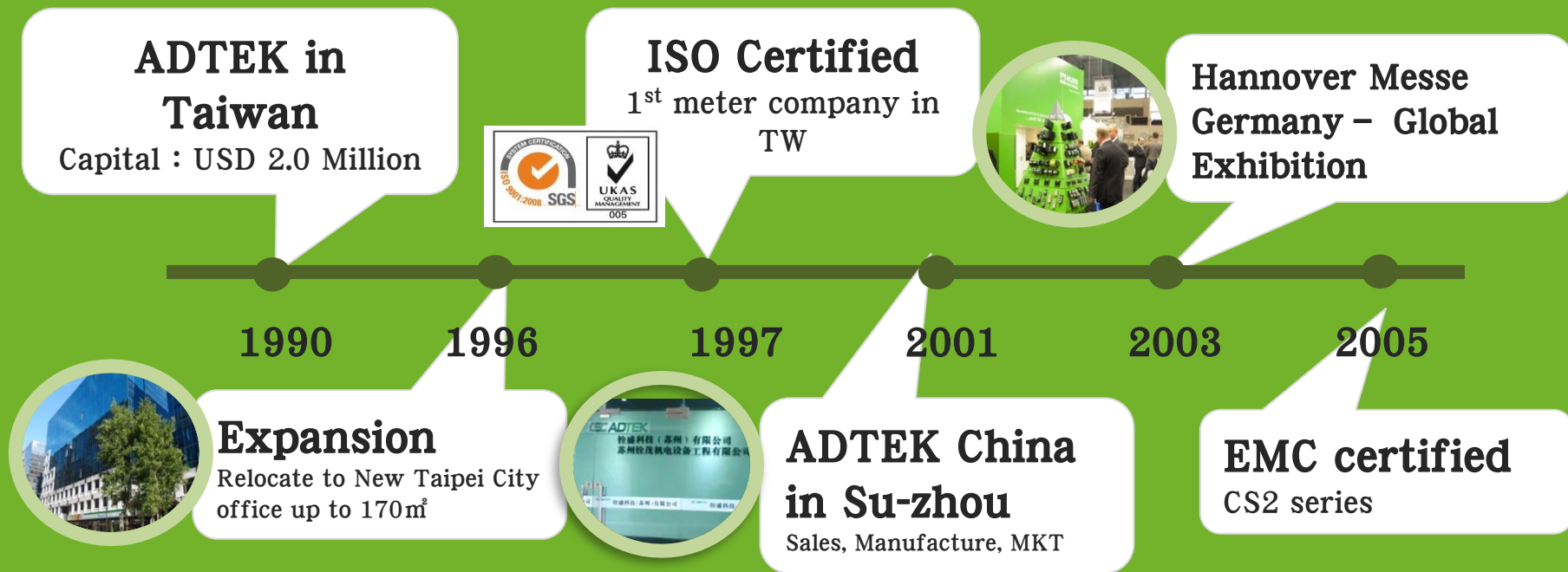


Company Overview

- Taiwan Headquarter: Established in Y1990.
- Capital : USD \$ 2.0 Millions
- Annual Sales Value : USD \$ 6.35 Millions
- China Branch: Established in Y2001.
(Su Zhou City, Jiang Su Province)
- Employees : 95 ppl
- Major Product:
 - Power meter, EMS
 - Transducer
 - Sensing product

ADTEK

Company Evolution



Company Evolution



MEE in Dubai

Middle east electricity
business development



Expansion:
+R&D employees
up to 580m²

CPM-80
Official launch



2007

2010

2013

2015

2017

2018



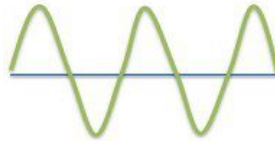
FCC certified
CWQ series



Indonesia
exhibition

ADTEK Brand Concept

A analog **D** igital



**Analog
Signal**

Vs



**Digital
Signal**

ADTEK Brand Concept

A_c D_c



AC



DC

Brand Core Value

ADTEK

Smart MiT, Easy Link



Smart MiT, Easy Link



IoT Platform



Cloud



Modbus, Ethernet,
NB-IoT, WiFi...
Wire/Wireless Communication



PL series



AD-300, 520 gateway

0-10V / 4-20mA

RS485/Ethernet...



Measuring,
Transduce



CS1/CS2/CS3/CM1....



AT



CPM Family



AEM Family (Multi)



Sensing



Temp./Humidity/Pressure/Liquid Level/CO/CO2/
PM2.5/VOC/Weight/Spin rate....



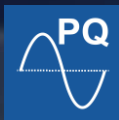
Current Transformer (CT)



CPM-80 Power Analyzer



ADTEK

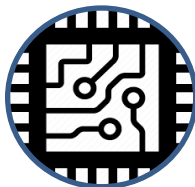


- ✓ High Accuracy: 0.2S (IEC 62053-22 , ANSI 12.20 ,Class 0.1 & 0.2)
- ✓ Voltage Swell / Sag
- ✓ Waveform Capture
- ✓ Ethernet x1, Modbus x2
- ✓ Individual harmonic up to 63rd
- ✓ 3.5" TFT LCD Screen

Suitable for power quality sensitive applications, such as:



Manufacturing



Semiconductor



Data centers



Telecom.



Health care



AD-SeeS - IoT Platform

AD-SeeS is a real time IoT monitoring platform designed by industrial meter specialist ADTEK .
By using our APP or webpage, you could easily see the data of ADTEK full range of Modbus meters (OT) and other 3rd party Modbus Device. Our IoT gateway support Ethernet or WiFi for user client side (IT).
You could easily upgrade to Industry 3.0

AD-520
Gateway



IoT- Gateway
AD-300 Plus

Modbus ↑



ADTEK Meter Family
& 3rd party IO



High Power Consumption Machinery



Small to medium project



Trend



WiFi
(non-fixed IP)



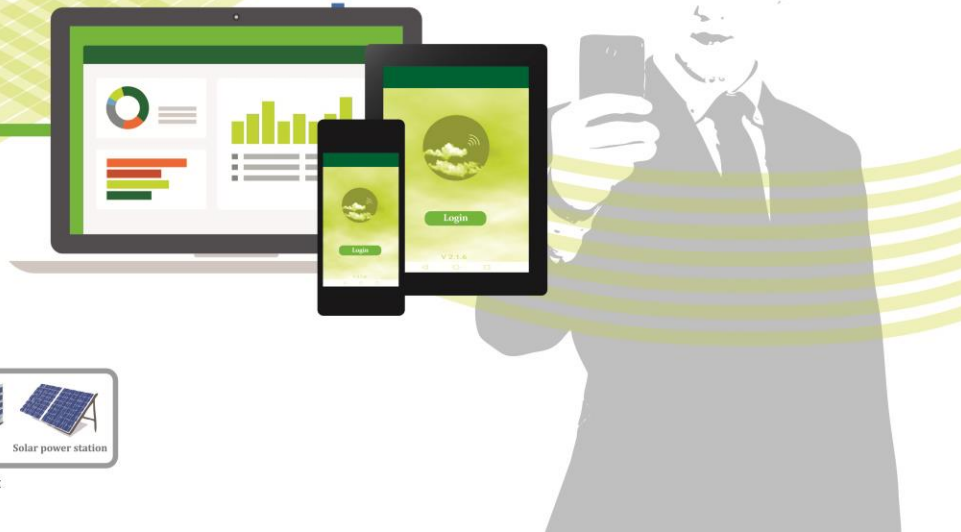
.CSV Export



Alarm
notification



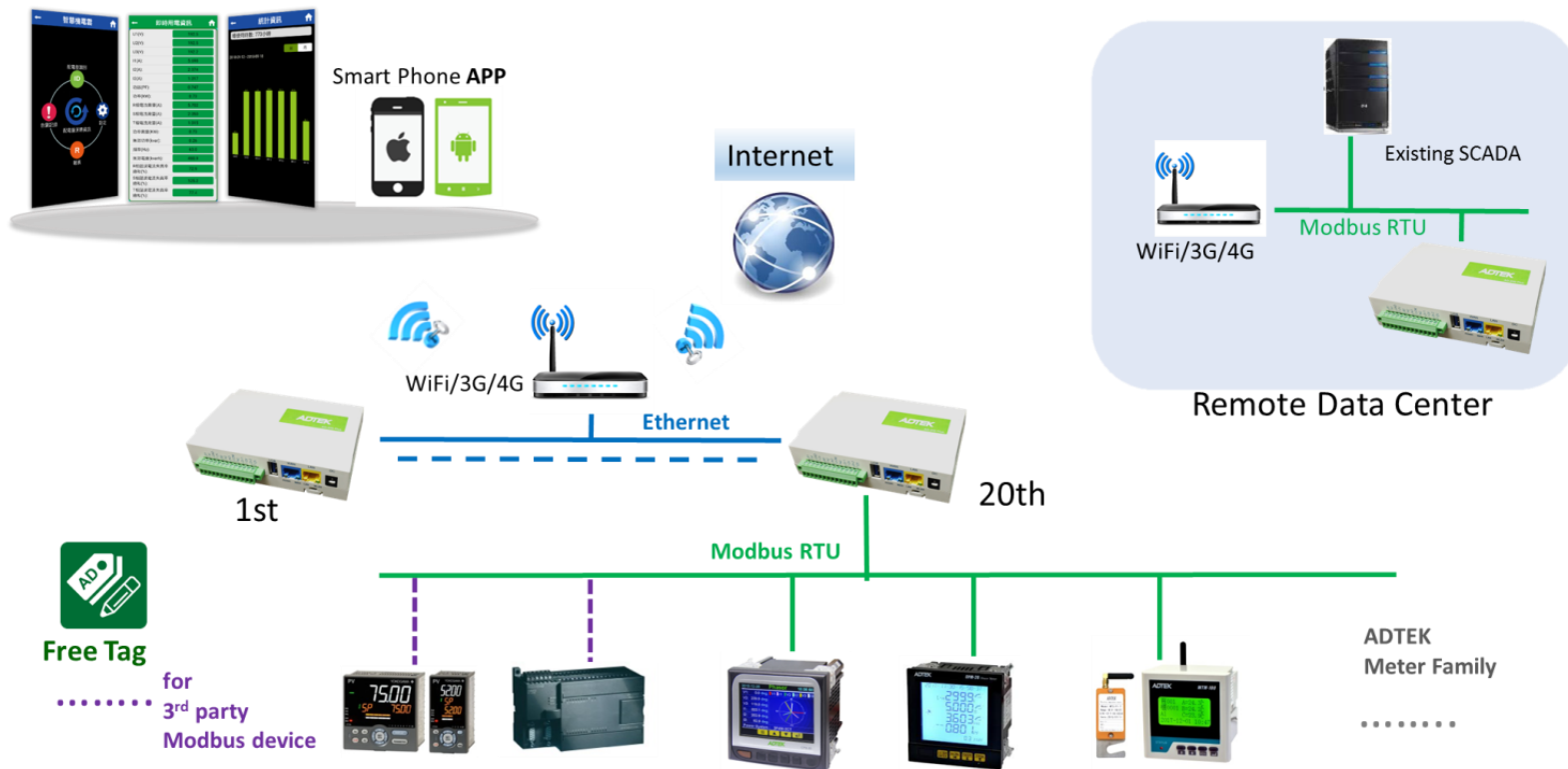
Free Tag





AD-SeeS

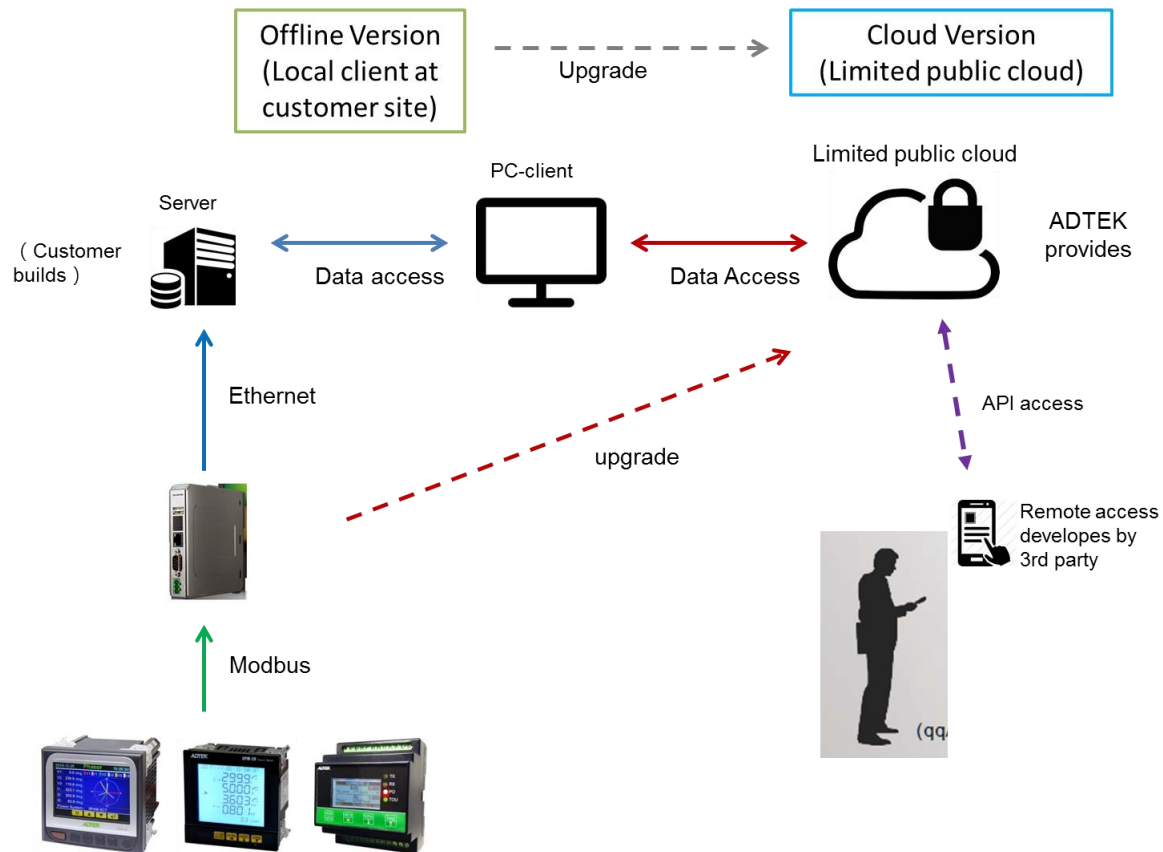
AD-SeeS-Mi Machinery IoT Platform





AD-SeeS

AD-SeeS-Mate IoT monitoring Platform





AD-SeeS

AD-SeeS-Mate IoT monitoring Platform

ADTEK



AD-SeeS-Mate

Overview

Layout Plan

Real Time Data

Analysis

Cost Analysis

Cost Report

Alarm

Equipment Management

Profile

English

ems

0

Energy Consumption

Total

55

kWh

Monthly

64

kWh



Lastest update 15:02:36

Energy Costs

Total

375

USD

Monthly

132

USD



Lastest update 15:02:36

CO2 Consumption

Total

141.4

kgCO2e

Monthly

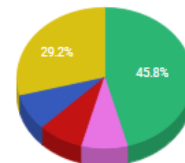
36.4

kgCO2e



Lastest update 15:02:36

Energy Consumption in %



Rig

Office

Aire Con...

Punching...

CNC Ma...

Voltage Trend



Current Trend



Frequency Trend



Unique
DC Multi-
Circuit Design



AEM-DD



For application of

- Solar power generation
- Wind power
- Battery Bank



Easy Link with many communication types

Wire



Ethernet

BACnet™

Wireless



WiFi

NB-IoT

zigbee

Support
NB-IoT



AEM-DR
Multi-circuit power meter



ADPower Series

ADTEK

In the trend of industrial IoT, data collection demand is increasing.
ADTEK present you ...

New Modular design!
with Power Meter + I/O + Gateway in ONE unit!

One stop for
Power/ Industry
Data measuring
& communication



ADP-PM-A Multi-circuit Power meter
+ **ADPower** Remote I/O
+ **AD-GW** Gateway (Ethernet/WiFi)

實績



01. Power Management



02. Industry



03. Smart Building

ADTEK in Power Facility

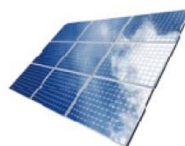
**Power
Generation**



345KV/161KV/69KV

**High
Voltage
Power
Panel**

**Solar
Power**



VAW



DL1S

**Transmit
&
Distribution**



22.8KV/11.4KV



CPM-70



WTM-100



CPT



CA33/CA12

**Sub-
Station**



380V

**Low
Voltage
Power
Panel**



CPM-70



WTM-100



CPT



CA33/CA12

Machinery



- MCC
- FDP
- LPR



CPM-10



CPM-20



AEM-DR



AEM-DRA

Production Environment: Air Conditioning & Air Quality Monitoring



Production Management: PID Controller



Production Management: Wastewater Discharge Monitoring



Big Data Cloud Computing

Production Management: Weight monitoring



Device Status: Motor Monitoring



Plant Power Monitoring



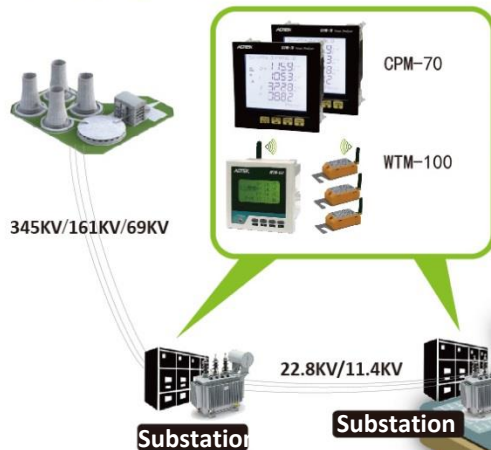
Production Management: Process Control & Monitoring



Production Management: Sensing Transducer



Power Management



Multi-loop power monitoring



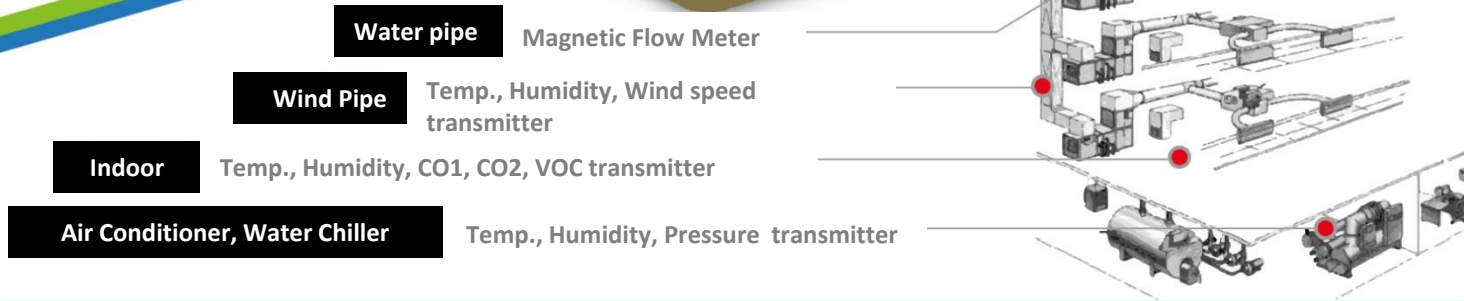
AEM-DR



AEM-DRA

Airport Terminal

Air Condition



Power



CPM-70 CPM-20
Multi-function power meter



AEM-DRA
Multi-circuit power meter



CM1-VA
Process Meter



WTM-100
Wireless Temp. Meter



Building: Billing for Office equipment
and lighting device

Air Condition



TS
2 WIRE TEMP. Transmitter



PS
PRESSURE Transducers



HTO
CO / CO2 / Temperature &
Humidity Transmitter



BTU-EC BTU-FZ
Magnetic/Ultrasonic
Flow/Heat Meter



AEM-DRA Chain Store Application

1 Freezer Room Electricity Management



2 Kitchen Equipment Electricity Management



3 Menu board / Lighting / Shop sign Electricity Management



4 Air Conditioner System Electricity Management



5 AEM-DRA applied in fast food restaurant switchgear room



⚡ Energy Management

IDC/Tele Center Power monitoring



CPM-70
Multifunction Power Meter

Power monitoring of each racks



AEM-DRA
Multi-circuit
Power Meter

Projects

Asia Pacific Telecom IDC Center

☁ Monitoring Center

RS485

Ethernet

Zigbee

Modbus

BACnet

Control Center



A/O

RS485

Ethernet

Zigbee

WiFi

❄ Air Conditioning

Environmental monitoring



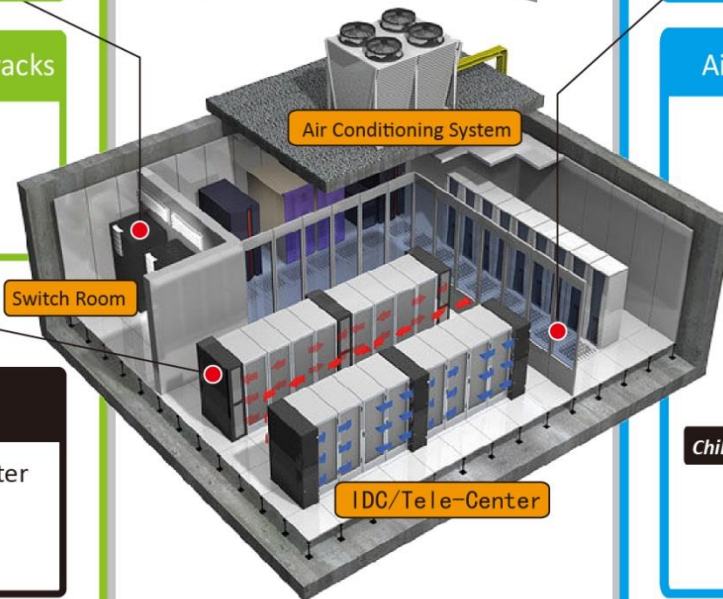
HTO
Temp. & Humidity Sensor

Air Conditioning monitoring

Orifice Tube : BTU thermal processing equipment

Ducts : Temperature, Humidity, Wind velocity sensing transducers

Chiller : Temperature, Humidity, Pressure sensing transducers



F A R E A S T O N E

遠傳

遠傳電信 板橋區電信機房



台灣大寬頻

台灣大寬頻 觀天下有線電視 電信機房



智慧生活

行動 • 寬頻 • 數位

亞太電信 電信機房



英國維京電訊 通訊基地台

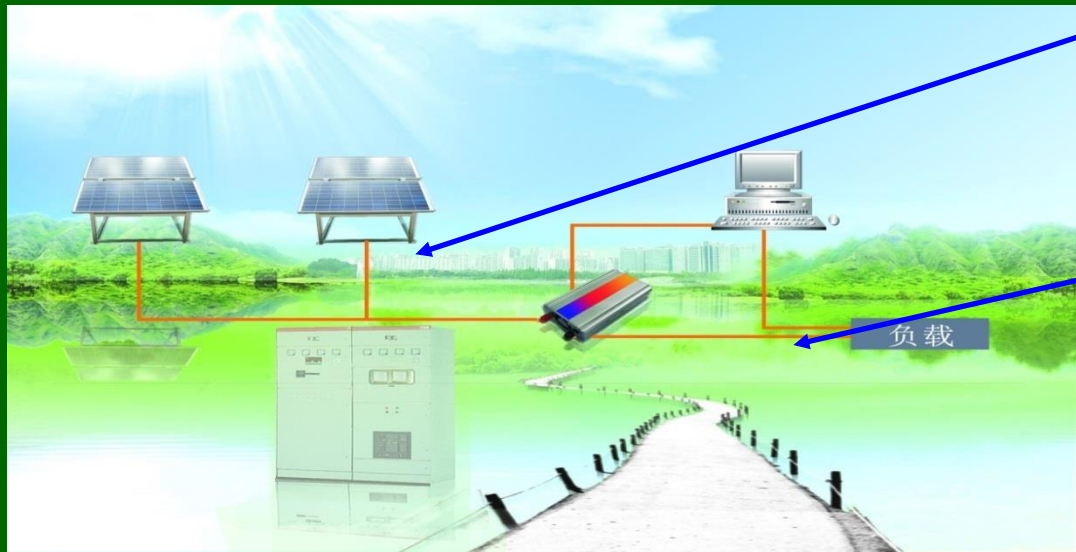


聯維有線電視/超字寬頻 電信機房



馬來西亞電訊公司 電信機房

Renewable Energy —Solar Power Generation(PV)



DC Power Meter



AC Power Meter

01. Power Management



Key Account

- ◆ Electronics and system company: (LV) power management
- ◆ Product : CPM20 、 CPM50 、 CPM70 、 AEM-DR...

AUO 友達光電
AU Optronics

wis ron
緯創資通

ASUS[®]

ADVANTECH
研華科技

JABIL



Foxconn Group - CPM 70

 *Key Account*



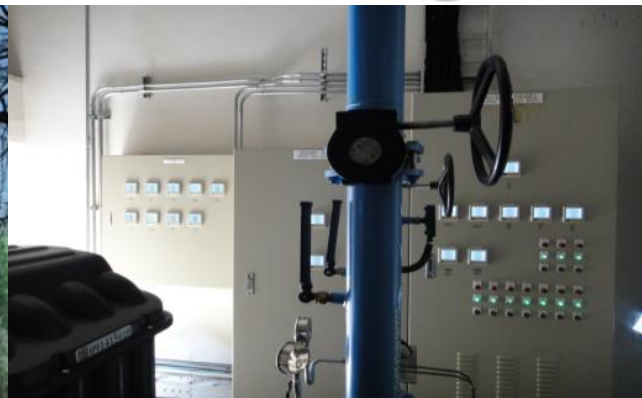
Application: TSMC



Key Account



Green Magic School (zero carbon building)

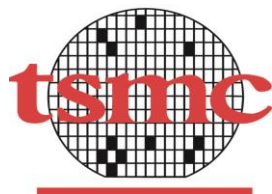


02. Industry 4.0



Key Account

- ◆ Semiconductor 、 Textile 、 Power Facility : Power Consumption monitoring, automation process condition measuring
- ◆ Product : CPM20 、 CPM50 、 CPM70 、 AEM-DR...



03. Smart Building

Y2012 Relais
(Innovation Trophy)

Y2010 Taipei City
Energy Saving Silver Award



Villa32



Breeze Center
billing



Taipei World Trade Center
Air Condition



Le Méridien Taipei



MING YAO Department Store
billing




Taipei City Hall
BEMS




Taipei Ximen Market
billing



Taipei City Hospital
Air condition



Cheng Kong University
BEMS

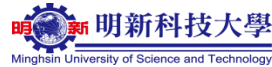
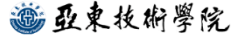


ASUS Headquarter
EMS



University Sponsorship

Taipei



Tainan



East coast



Taichung



South



2018 Taiwan National Skill Competition





Partner



ADTEK

SIEMENS Schneider Electric

ADVANTECH

Partner

ANPRO
System Integration



寧英機械自動控制有限公司
名星電機工程有限公司

ULVAC

YASKAWA



Pro-face
by Schneider Electric

OMRON



APPLIED
MATERIALS®

Global Export Business

ADTEK

South East Asia / South Asia

South Korea 、 Vietnam 、 Philippine 、 Indonesia 、 Malaysia 、 Singapore 、 Thailand 、 India 、 Pakistan

Russia 、 Australia

Middle East

UAE 、 Iran 、 Israel 、 Lebanon

Europe

UK, Spain, Italy, Romania, Germany, Swiss, Belgium

America

U.S 、 Canada 、 Mexico 、 Chile 、 Brazil 、 Peru 、 Columbia 、 Bolivia

Africa

Egypt 、 South Africa

ADTEK



中国工博会
CHINA INTERNATIONAL INDUSTRY FAIR



Why ADTEK?

Quality



MTBF (Mean Time Between Failure)
= more than 60,000 hours



SGS/EMC/FCC/LVD



3-year warranty

Completeness



Complete product range

Margin



High profit margin

Service



Professional OEM experience

Major Certificate



ISO-9001



SICEM



TAF

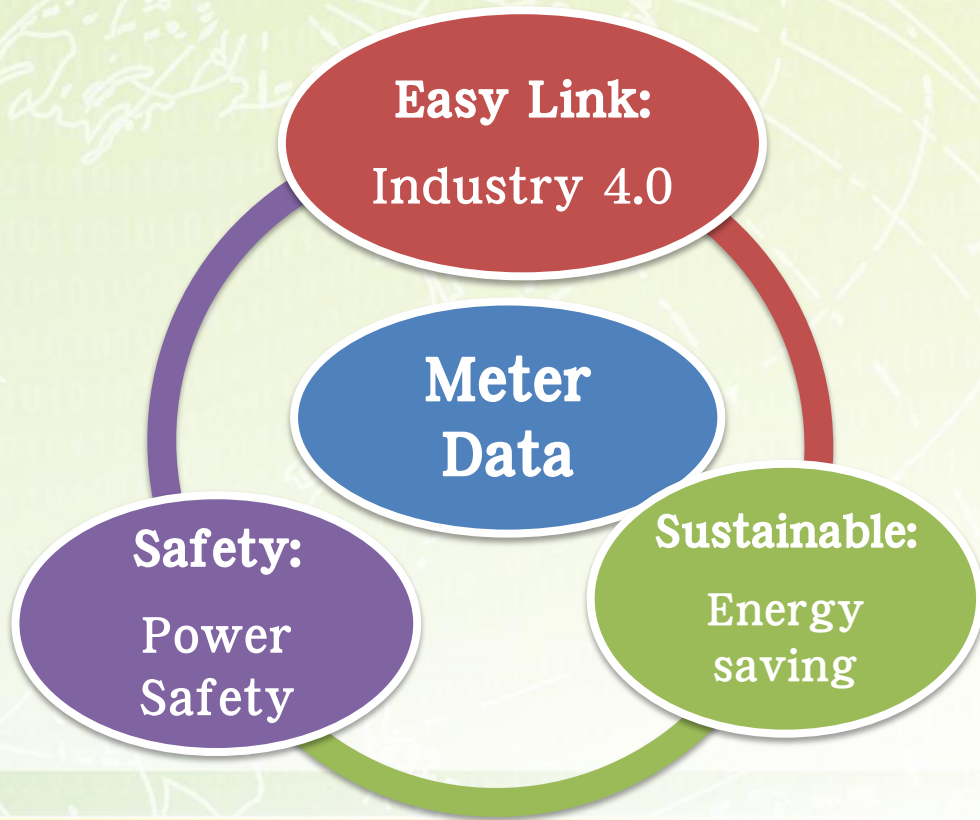


CE



SGS

Our Vision





The End
Thank you!

ADTEK

Smart MiT, Easy Link

